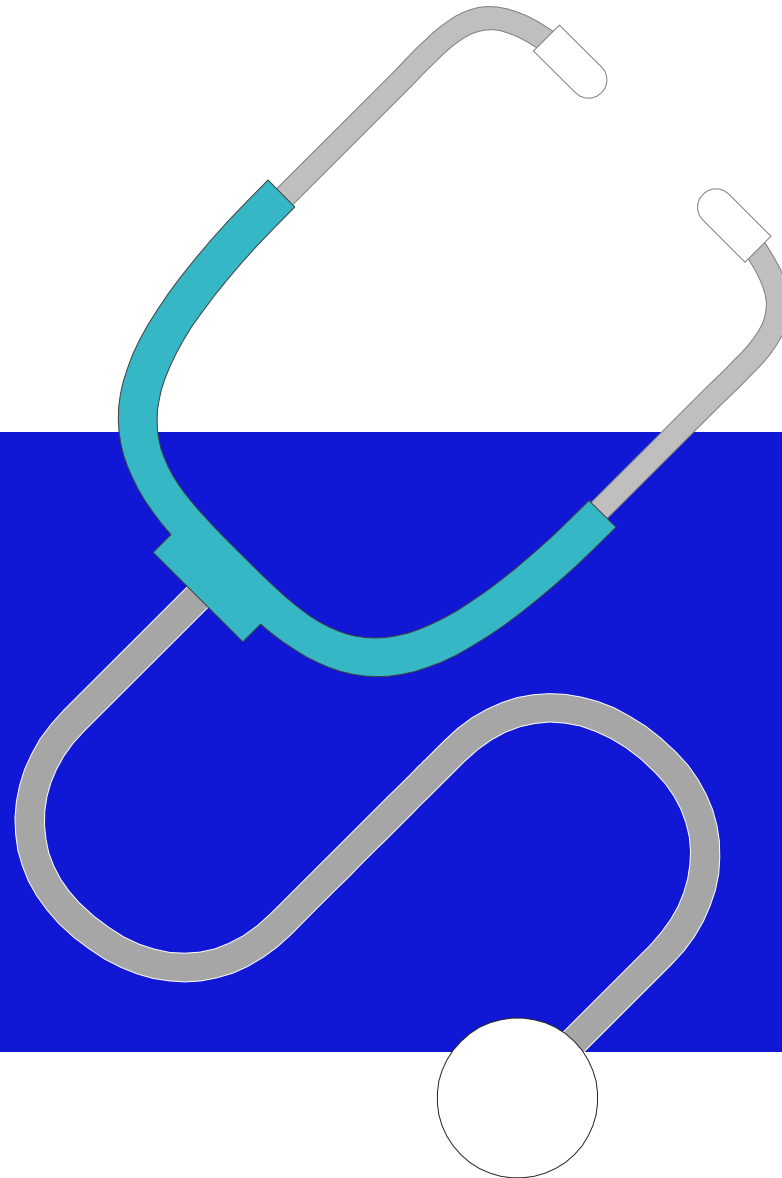




General Practice Case Study

Delapre Medical Centre &
Whitefields Surgery



Case Study

Delapre Medical Centre &
Whitefields Surgery



Situation

The practice needed to address increasing demand for appointments.



Solution

By implementing Doctorlink's Online Triage, the practice was able to reduce demand by efficiently directing people to the most appropriate care pathway.



Results

3,651 patient registrations, representing 36% of patients engaged with a GP. 37% of those patients have been rerouted to alternative care. Of those patients who were directed to the practice, 29% were recommended a telephone consultation. Total cost saving of £42,435.

Situation

Delapre Medical Centre & Whitefields Surgery were facing increasing demand for appointments. The practice needed to move away from a first come, first served system, which was causing administrative burden, and move to a system that focused on those most in need.





Solution

In February 2020, Delapre Medical Centre & Whitefields Surgery implemented Doctorlink's Online Triage platform. This allowed the practice to efficiently manage demand by directing people to the most appropriate care pathway.

Online Triage has been used to assess the patients' symptoms online by asking a series of medical questions based on an algorithm built by doctors and technology innovators.

The solution then recommends the best healthcare pathway based on the symptom assessment results. This has helped reduce demand on services, saving the practice time and cost.

Results

Since the rollout of Online Triage in February 2020, **3,651** patients have registered with the service, which represents **36%** of *active patients.

More than **3,800** symptom assessments have been completed, with **37%** of those patients rerouted to alternative care such as self-help or emergency. Of those patients who were directed to the practice, **29%** were recommended a telephone consultation. This has led to a GP and admin time saving which is equivalent to more than **£42,400** (*NHS:cost of GP appointments)



- Active patients: The patients who are 16+ in age and actively engaged with their GP. On average 82% of the practice population is over 16 . And 68% of those (on average) are actively engaged with their GP.
- <https://www.england.nhs.uk/2019/01/missed-gp-appointments-costing-nhs-millions/#:~:text=Each%20appointment%20costs%20an%20average,of%20%2C325%20full%20time%20GPs>

3,823

Symptoms assessments
completed using Doctorlink

37%

Of patients were
recommended other
healthcare pathway

36%

of active patients are
registered with Doctorlink
App

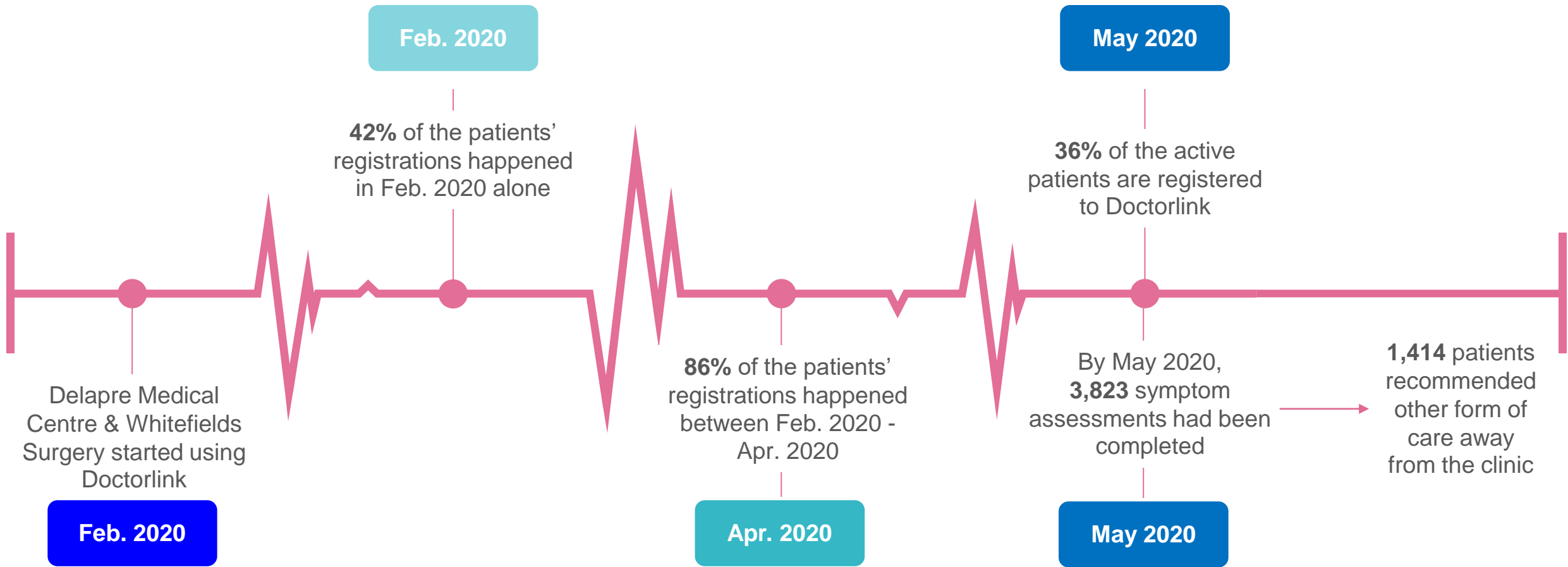
GP and admin time saving
which is equivalent to more than

£42,400

29%

Of patients were
recommended telephone
consultation

Timeline



Conclusion

Delapre Medical Centre & Whitefields Surgery are based in Northampton and form part of Eleanor Cross Healthcare. The original Delapre Medical Centre was an old established town practice with a small branch surgery in Delapre. It moved to a purpose-built centre in Delapre in January 1987 and merged with Whitefields Surgery in Camp Hill in April 2011. Online Triage has helped the practice reduce demand on services, offer better access for patients seeking care and assisted in the acquisition and retention of talent by transforming the experience for its GPs.